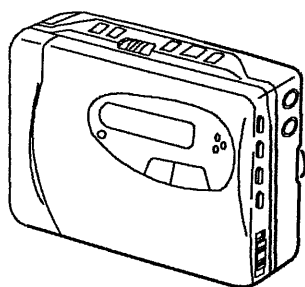


# aiwa

## HS-JX810



STEREO RADIO CASSETTE  
RECORDER

• BASIC TAPE MECHANISM : OZM - 4

• TYPE. AH,AE,AK,AZ

### SPECIFICATIONS

**Frequency range:**

FM: 87.5/87.5-108.1/108MHz (200/50kHz STEP)

AM: 530/531-1,710/1,602kHz (10/9kHz STEP)

**Maximum output:**

10mW+10mW (EIAJ/32Ω)

12mW+12mW (EIAJ/16Ω)

**Power source:**

Battery DC 2V, rechargeable battery (PB-S5)

Battery DC 3V, R-03, LR-03(AAA) × 2

Domestic AC power (using the supplied AC adaptor)

**Battery life:**

Rechargeable battery (PB-S5)

Approx. 2 hours (EIAJ, REC/1 hour recharging)

Approx. 1.5 hours (EIAJ, PB 1mW/10 minutes recharging)

Approx. 2.5 hours (EIAJ, PB 1mW/1 hour recharging)

**Dimensions:**

107.3 (W) × 76.8 (H) × 27.6 (D) mm

(4 1/4 × 3 1/8 × 1 1/8 in.)

**Weight:**

Approx. 220g (0.48 lb) incl. rechargeable battery

**<AC adaptor/AC-207>**

**Rated voltage:**

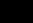
AC-207H AC 115V/230V, switchable

AC-207E, Z AC 220V

AC-207K AC 240V

**Rated output:**

DC 2V 350mA

- Design and specifications are subject to change without notice.
- Dolby noise reduction manufactured under license from Dolby Laboratories Licensing Corporation.
- "DOLBY" and the double-D symbol  are trademarks of Dolby Laboratories Licensing Corporation.
- The word "BBE" and the "BBE symbol" are trademarks of BBE Sound, Inc.
- Under license from BBE Sound, Inc.

MANUAL  
SERVICE

## DISASSEMBLY INSTRUCTIONS

### 1. "Lid Cass ASSY" Removal (See Figure - 1)

- 1) Remove 3 screws (A)  $\times 2$ , (B)  $\times 1$  and remove the "Lid Cass ASSY".

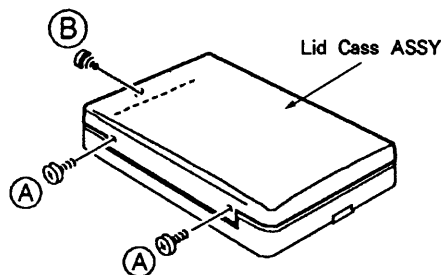


Fig - 1

### 2. "Hldr, Cass" Removal (See Figure - 2)

- 1) Remove 5 screws (A)  $\times 3$ , (B)  $\times 2$  and remove the "Hldr, Cass".
- 2) Remove screw (C) and remove the "TU Circuit Board".

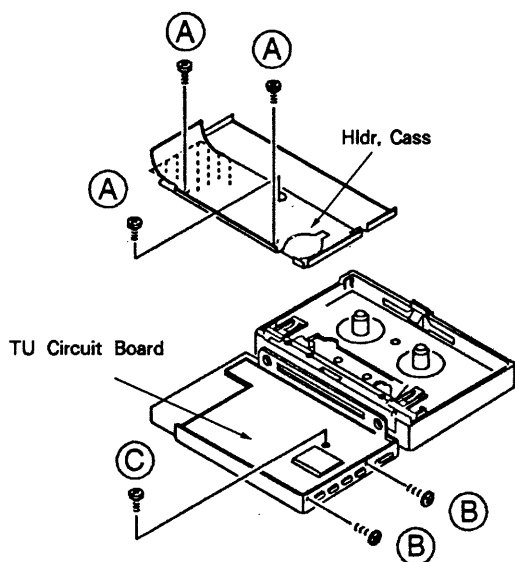


Fig - 2

### 3. "Cab, Rear" Removal (See Figure - 3)

- 1) Remove screw (A) and remove the "Lid, Bat" in the direction of arrow ①.
- 2) Remove 6 screws (B)  $\times 1$ , (C)  $\times 1$ , (D)  $\times 1$ , (E)  $\times 2$ , (F)  $\times 1$  the "Cab, Rear".

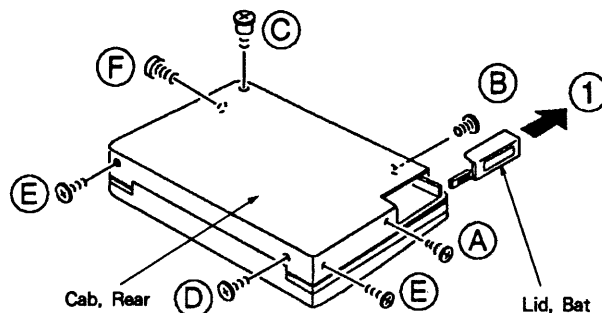


Fig - 3

### 4. "Frame, Center" and "Frame, Bottom" Removal

(See Figure - 4)

- 1) Remove the "Frame, Center" in the direction of arrow ①.
- 2) Remove the "Frame, Bottom" in the direction of arrow ②.

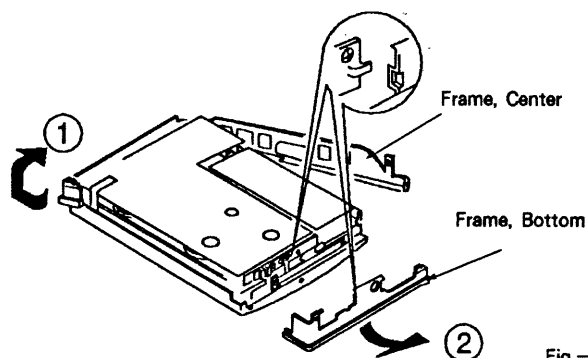


Fig - 4

### 5. "Main C.B" Removal (See Figure - 5)

- 1) Remove 7 screws (A)  $\times 1$ , (B)  $\times 2$ , (C)  $\times 1$ , (D)  $\times 1$ , (E)  $\times 2$  unsolder the soldered points and remove the "Main C.B".

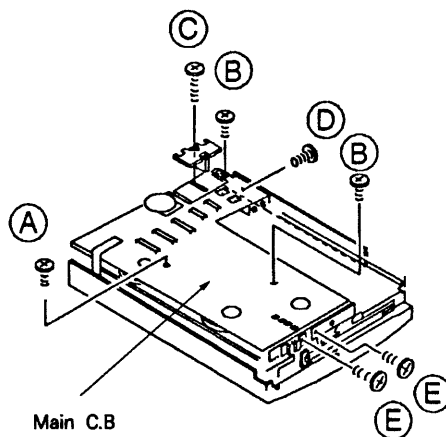
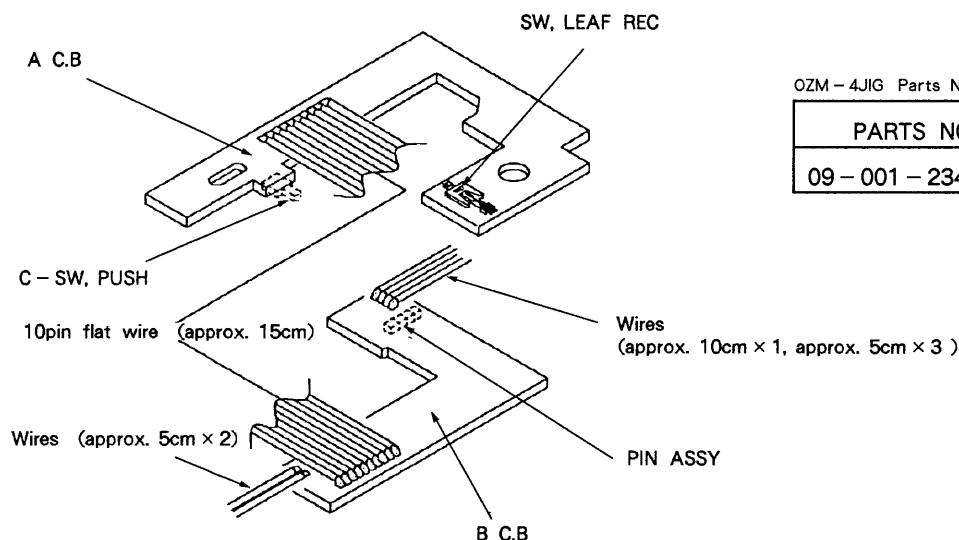


Fig - 5

♣Cautions when servicing (See Figure - a)

When the Main C.B is opened for servicing,  
operation check cannot be performed because  
the terminals of the motor, etc. are soldered  
directly to the Main C.B. Therefore, use a jig  
(OZM - 4 JIG KIT), show in the figure below,  
to check the operation.

Refer to service information G - 91 - 45 for details.



OZM - 4JIG Parts NO

PARTS NO	DISCRIPTION
09 - 001 - 234 - 010	OZM - 4 JIG KIT

Fig - a

♣How to attach the jig (See Figure - b)

(Cautions)

- b) Use a braided wire to remove solder.
- b) The Main C.B. has a auto stop sensor.  
Make the light of a flourscent lamp strike  
the sensor in a room where external light dose not  
enter so the auto stop function is disabled.

- 1) Attach the A C.B to the  
Mechanism ASSY  
whit screw (A).
- 2) Solder the 4 MD  
Solenoid Terminals  
REC Solenoid Terminals.
- 3) Solder the 4 Motor  
Terminals.
- 4) Solder the PIN ASSY  
of the Main C.B.
- 5) Dress the wires  
as shown in  
the figure.
- 6) Short the solder  
patterns of  
the Key C.B  
on the Main C.B as  
shown in the figure.
- 7) Set the remote  
switch to on.
- 8) Use a remote  
control to operate.

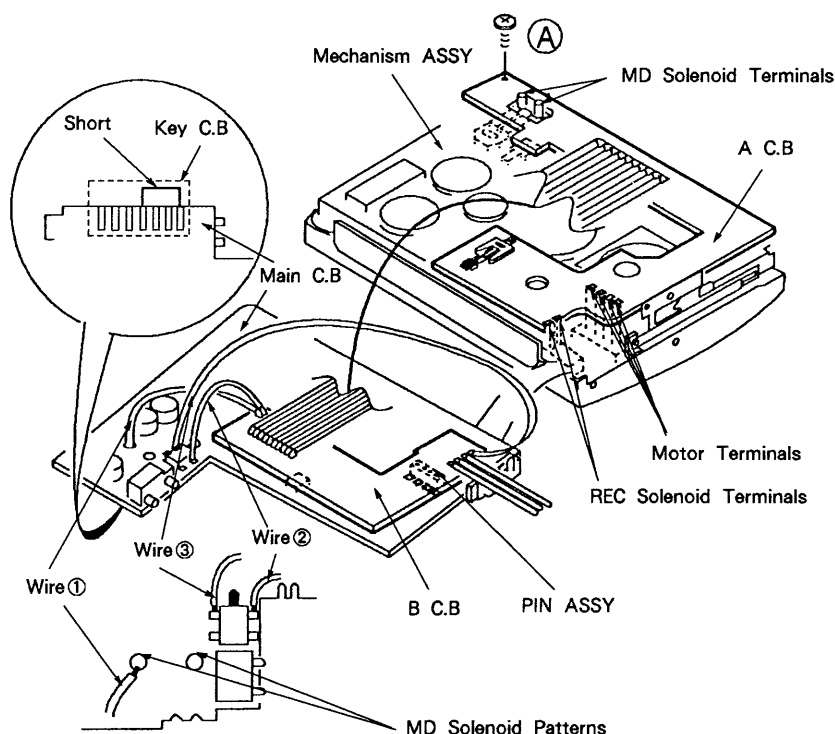


Fig - b

# ELECTRICAL MAIN PARTS LIST

DESCRIPTION で判断できない物は24ページの“REFERENCE NAME LIST”を参照してください。

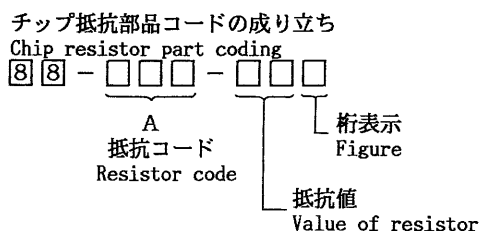
If can't understand for Description please kindly refer to “REFERENCE NAME LIST”.

REF. NO.	PART NO.	DESCRIPTION	REF. NO.	PART NO.	DESCRIPTION
=== IC ===			C14	★87-012-274-080	C-CAP, U 1000P-50 B
	87-001-808-010	IC, ASP5410	C15	★87-010-871-080	C-CAP, U 390P-50 SL
	87-001-875-080	IC, BA1106FS	C16	★87-010-871-080	C-CAP, U 390P-50 SL
	87-002-522-080	IC, CXA1405AM	C17	★87-010-958-080	C-CAP, S 0.01-25 B J
	87-002-425-080	IC, MM1085XF			
	87-002-815-080	IC, SC17700YAA	C18	★87-010-958-080	C-CAP, S 0.01-25 B J
	87-002-782-080	IC, SC17710YHA	C19	★87-010-640-080	C-CAP, TN 22-4 F95
	87-020-234-080	IC, TA7688F(S)	C20	★87-010-640-080	C-CAP, TN 22-4 F95
	87-001-145-080	IC, TA8126F	C21	★87-010-805-080	C-CAP, S 1-16 F
	87-001-971-080	IC, TA8132AF			
	87-001-931-080	IC, TA8152AFN	C22	★87-010-805-080	C-CAP, S 1-16 F
	87-001-894-080	IC, TA8155FN	C23	★87-012-282-080	C-CAP, U 4700P-50 B
	87-002-611-080	IC, TB2003-003-FN	C24	★87-012-282-080	C-CAP, U 4700P-50 B
	87-002-543-010	IC, TC9316F-004	C25	★87-010-193-080	C-CAP, S 0.033-25 F
	87-001-151-080	IC, TD6134F1			
	87-002-406-080	IC, TPIC326ADB	C26	★87-010-193-080	C-CAP, S 0.033-25 F
=== TRANSISTOR ===			C27	★87-010-197-080	C-CAP, S 0.01-25 B
	87-026-362-080	C-TR, 1MB7(B7)	C28	★87-010-197-080	C-CAP, S 0.01-25 B
	87-026-412-080	C-TR, RN1305(XE)	C29	★87-010-193-080	C-CAP, S 0.033-25 F
	87-026-414-080	C-TR, RN1307(XH)			
	87-026-417-080	C-TR, RN1310(XK)	C30	★87-010-193-080	C-CAP, S 0.033-25 F
	87-026-418-080	C-TR, RN1311(XM)	C31	★87-010-196-080	C-CAP, S 0.1-25 F
	87-026-474-080	C-TR, RN1605(XE)	C32	★87-010-196-080	C-CAP, S 0.1-25 F
	87-026-475-080	C-TR, RN1607(XH)	C33	★87-010-805-080	C-CAP, S 1-16 F
	87-026-481-080	C-TR, RN4607(VH)			
	87-026-482-080	C-TR, RN4610(VK)	C34	★87-010-805-080	C-CAP, S 1-16 F
	89-112-134-080	C-TR, 2SA1213Y(NY)	C41	★87-016-057-080	C-CAP, TN 47-4 F95
	89-113-625-080	C-TR, 2SA1362GR(AEG)	C42	★87-010-942-080	C-CAP, E 47-4
	89-115-864-080	C-TR, 2SA1586Y(SY)	C43	★87-010-805-080	C-CAP, S 1-16 F
	89-115-884-080	C-TR, 2SA1588Y(ZY)			
	89-341-165-080	C-TR, 2SC4116GR(LG)	C44	★87-010-805-080	C-CAP, S 1-16 F
	89-342-132-080	C-TR, 2SC4213B(AB)	C45	★87-012-286-080	C-CAP, U 0.01-25 B
	89-342-153-080	C-TR, 2SC42150(QQ)	C46	★87-012-286-080	C-CAP, U 0.01-25 B
	89-508-804-080	C-FET, 2SK880Y(XY)	C47	★87-010-757-080	C-CAP, U 0.047-25F
	89-508-805-080	C-FET, 2SK880GR(XG)			
	89-508-824-080	C-FET, 2SK882Y(TY)	C48	★87-010-757-080	C-CAP, U 0.047-25F
	87-026-342-080	C-TR, DTC144EU(26)	C49	★87-010-757-080	C-CAP, U 0.047-25F
	87-026-467-080	C-TR, HN1C01F(GR) (C1G)	C50	★87-010-757-080	C-CAP, U 0.047-25F
	87-026-470-080	C-TR, HN1C03F(B) (C3B)	C51	★87-012-191-080	C-CAP, U 68P-50 CH
=== DIODE ===					
	87-001-764-080	C-DI, 1MN10(N10)	C52	★87-012-191-080	C-CAP, U 68P-50 CH
	87-001-553-080	C-DIODE, 1SS322(A9)	C53	★87-010-757-080	C-CAP, U 0.047-25F
	87-001-165-080	C-DIODE, 1SS300(A3)	C54	★87-010-757-080	C-CAP, U 0.047-25F
	87-001-166-080	C-DIODE, 1SS301(B3)	C55	★87-010-522-080	C-CAP, TN 2.2-10
	87-001-167-080	C-DIODE, 1SS302(C3)			
	87-001-221-080	C-DIODE, 1SS319(A4)	C56	★87-010-522-080	C-CAP, TN 2.2-10
=== MAIN CIRCUIT BOARD SECTION ===			C57	★87-010-424-080	C-CAP, TN 4.7-4
C1	★87-015-923-080	C-CAP, TN 0.22-35	C58	★87-010-424-080	C-CAP, TN 4.7-4
C2	★87-015-923-080	C-CAP, TN 0.22-35	C59	★87-012-142-080	C-CAP, S 0.33-16 F
C3	★87-010-787-080	C-CAP, U 0.022-25B	C60	★87-012-142-080	C-CAP, S 0.33-16 F
C4	★87-010-787-080	C-CAP, U 0.022-25B	C61	★87-012-199-080	C-CAP, U 220P-50 CH
			C62	★87-012-199-080	C-CAP, U 220P-50 CH
			C63	★87-010-805-080	C-CAP, S 1-16 F
C5	★87-010-805-080	C-CAP, S 1-16 F			
C6	★87-010-805-080	C-CAP, S 1-16 F	C64	★87-010-805-080	C-CAP, S 1-16 F
C7	★87-010-805-080	C-CAP, S 1-16 F	C65	★87-010-640-080	C-CAP, TN 22-4 F95
C8	★87-010-805-080	C-CAP, S 1-16 F	C66	★87-010-787-080	C-CAP, U 0.022-25B
			C67	★87-012-281-080	C-CAP, U 3900P-50 B
C9	★87-012-195-080	C-CAP, U 100P-50 CH			
C10	★87-012-195-080	C-CAP, U 100P-50 CH	C68	★87-012-281-080	C-CAP, U 3900P-50 B
C11	★87-010-805-080	C-CAP, S 1-16 F	C69	★87-016-034-080	C-CAP, U 0.027-25 F
C12	★87-010-805-080	C-CAP, S 1-16 F	C70	★87-016-034-080	C-CAP, U 0.027-25 F
			C71	★87-010-805-080	C-CAP, S 1-16 F
C13	★87-012-274-080	C-CAP, U 1000P-50 B			
			C72	★87-010-759-080	C-CAP, U 0.1-25F
			C73	★87-012-278-080	C-CAP, U 2200P-50 B
			C74	★87-010-805-080	C-CAP, S 1-16 F
			C75	★87-010-805-080	C-CAP, S 1-16 F
			C76	★87-010-805-080	C-CAP, S 1-16 F
			C77	★87-010-805-080	C-CAP, S 1-16 F
			C78	★87-010-805-080	C-CAP, S 1-16 F
			C79	★87-010-830-080	C-CAP, U 0.068-16F
			C80	★87-010-830-080	C-CAP, U 0.068-16F
			C81	★87-010-830-080	C-CAP, U 0.068-16F
			C82	★87-010-830-080	C-CAP, U 0.068-16F
			C83	★87-010-805-080	C-CAP, S 1-16 F

REF. NO.	PART NO.	DESCRIPTION	REF. NO.	PART NO.	DESCRIPTION
C84	★87-010-805-080	C-CAP, S 1-16 F	L11	★87-007-246-080	C-COIL, OSC BIAS
C85	★87-010-787-080	C-CAP, U 0.022-25B	L12	★87-003-240-080	C-COIL, S 3.3 UH
C86	★87-010-787-080	C-CAP, U 0.022-25B	L13	★81-HJ1-620-010	COIL, LOADING
C87	★87-012-270-080	C-CAP, U 470P-50 B	L14	★87-003-240-080	C-COIL, S 3.3 UH
C88	★87-012-270-080	C-CAP, U 470P-50 B	L15	★87-003-240-080	C-COIL, S 3.3 UH
C89	★87-010-805-080	C-CAP, S 1-16 F	PL1	★80-ZM4-601-210	SOL, MD PL (MD)
C90	★87-010-805-080	C-CAP, S 1-16 F	PL2	★80-ZM4-602-010	SOL, REC (REC)
C91	★87-010-196-080	C-CAP, S 0.1-25 F	R15	★87-022-217-080	C-RES, U 1.2K-1/16W F
C92	★87-010-196-080	C-CAP, S 0.1-25 F	R16	★87-022-217-080	C-RES, U 1.2K-1/16W F
C93	★87-010-188-080	C-CAP, S 6800P-50 B	R164	★87-022-043-080	C-RES, M M/F 8.2K-1/8
C94	★87-012-284-080	C-CAP, U 6800P-50 B	S1	87-036-244-080	C-SW, SLIDE (NC) (F/R)
C95	★87-010-805-080	C-CAP, S 1-16 F	S2	80-ZM4-605-010	SW, LEAF REC (REC)
C96	★87-010-805-080	C-CAP, S 1-16 F	S3	87-036-123-080	C-SW, SLIDE (DOLBY NR/OSC/FM MODE)
C97	★87-016-057-080	C-CAP, TN 47-4 F95	S5	87-036-123-080	C-SW, SLIDE (BBE)
C99	★87-010-830-080	C-CAP, U 0.068-16F	S6	87-036-123-080	C-SW, SLIDE (PLSS)
C100	★87-010-805-080	C-CAP, S 1-16 F	S7	87-036-145-080	C-SW SLIDE (REMOTE)
C101	★87-010-640-080	C-CAP, TN 22-4 F95	S8	87-036-123-080	C-SW, SLIDE (REVERSE MODE)
C102	★87-010-746-080	C-CAP, TN 10-4	S9	87-036-236-080	C-SW, SLIDE (NC) (F/R)
C103	★87-010-640-080	C-CAP, TN 22-4 F95	S10	87-036-237-080	C-SW, PUSH (PLAY)
C104	★87-012-274-080	C-CAP, U 1000P-50 B	SFR1	★87-024-079-080	C-SFR, 5K D-SIDE
C105	★87-012-270-080	C-CAP, U 470P-50 B	<i>TM3</i> VR1	<i>80-HK3-606-010</i> ★87-024-155-010	VR RK10J12T20K (A) (VOLUME)
C106	★87-012-286-080	C-CAP, U 0.01-25 B	=== TUNER CIRCUIT BOARD SECTION ===		
C107	★87-012-270-080	C-CAP, U 470P-50 B	C201	★87-012-274-080	C-CAP, U 1000P-50 B
C108	★87-012-278-080	C-CAP, U 2200P-50 B	C203	★87-012-275-080	C-CAP, U 1200P-50 B
C109	★87-010-197-080	C-CAP, S 0.01-25 B	C207	★87-012-286-080	C-CAP, U 0.01-25 B
C110	★87-010-424-080	C-CAP, TN 4.7-4	C208	★87-012-337-080	C-CAP, U 56P-50 CH
C111	★87-012-286-080	C-CAP, U 0.01-25 B	C209	★87-012-286-080	C-CAP, U 0.01-25 B
C112	★87-012-279-080	C-CAP, U 2700P-50 B	C210	★87-012-167-080	C-CAP, U 5P-50 CH
C113	★87-010-196-080	C-CAP, S 0.1-25 F	C212	★87-010-829-080	C-CAP, U 0.047-16F
C114	★87-010-805-080	C-CAP, S 1-16 F	C216	★87-012-162-080	C-CAP, U 1P-50 CK
C115	★87-012-286-080	C-CAP, U 0.01-25 B	C217	★87-010-316-080	C-CAP, S 33P-50 CH
C116	★87-010-942-080	C-CAP, E 47-4	C218	★87-012-286-080	C-CAP, U 0.01-25 B
C117	★87-010-196-080	C-CAP, S 0.1-25 F	C219	★87-012-193-080	C-CAP, U 82P-50 CH
C132	★87-010-174-080	C-CAP, S 470P-50 SL	C220	★87-010-829-080	C-CAP, U 0.047-16F
C133	★87-012-286-080	C-CAP, U 0.01-25 B	C222	★87-012-273-080	C-CAP, U 820P-50 B
C134	★87-010-944-080	C-CAP, E 220-4	C223	★87-010-787-080	C-CAP, U 0.022-25B
C135	★87-010-971-080	C-CAP, S 4700P-50 B J	C224	★87-010-829-080	C-CAP, U 0.047-16F
C136	★87-015-923-080	C-CAP, TN 0.22-35	C227	★87-010-805-080	C-CAP, S 1-16 F
C137	★87-010-196-080	C-CAP, S 0.1-25 F	C228	★87-010-758-080	C-CAP, U 0.068-25F
C138	★87-010-522-080	C-CAP, TN 2.2-10	C229	★87-010-831-080	C-CAP, U 0.1-16F
C139	★87-010-505-080	C-CAP, TN 1-16	C230	★87-012-141-080	C-CAP, S 0.22-16 F
C140	★87-010-504-080	C-CAP, TN 0.47-25	C231	★87-012-286-080	C-CAP, U 0.01-25 B
C141	★87-010-194-080	C-CAP, S 0.047-25 F	C233	★87-012-286-080	C-CAP, U 0.01-25 B
C142	★87-010-504-080	C-CAP, TN 0.47-25	C234	★87-012-270-080	C-CAP, U 470P-50 B
C143	★87-010-196-080	C-CAP, S 0.1-25 F	C235	★87-012-286-080	C-CAP, U 0.01-25 B
C144	★87-010-214-080	C-CAP, TN 0.68-16	C236	★87-012-282-080	C-CAP, U 4700P-50 B
C145	★87-010-196-080	C-CAP, S 0.1-25 F	C237	★87-012-337-080	C-CAP, U 56P-50 CH
C146	★87-015-922-080	C-CAP, TN 0.1-35	C238	★87-012-270-080	C-CAP, U 470P-50 B
C147	★87-010-522-080	C-CAP, TN 2.2-10	C239	★87-012-252-080	C-CAP, U 30P-50UJ
C301	★87-012-275-080	C-CAP, U 1200P-50 B	C240	★87-010-831-080	C-CAP, U 0.1-16F
C302	★87-012-275-080	C-CAP, U 1200P-50 B	C241	★87-010-482-010	CAP, E 220-4
C303	★87-010-942-080	C-CAP, E 47-4	C242	★87-010-829-080	C-CAP, U 0.047-16F
C304	★87-010-640-080	C-CAP, TN 22-4 F95	C243	★87-010-828-080	C-CAP, U 0.033-16 F
C305	★87-012-286-080	C-CAP, U 0.01-25 B	C244	★87-010-424-080	C-CAP, TN 4.7-4
C306	★87-010-943-080	C-CAP, E 100-4	C245	★87-012-280-080	C-CAP, U 3300P-50 B
C307	★87-010-944-080	C-CAP, E 220-4	C246	★87-012-286-080	C-CAP, U 0.01-25 B
C308	★87-010-759-080	C-CAP, U 0.1-25F	C247	★87-012-286-080	C-CAP, U 0.01-25 B
C309	★87-012-141-080	C-CAP, S 0.22-16 F	C248	★87-012-141-080	C-CAP, S 0.22-16 F
C310	★87-012-141-080	C-CAP, S 0.22-16 F	C249	★87-012-141-080	C-CAP, S 0.22-16 F
C311	★87-010-822-010	CAP, E 220-4 (MJ)	C250	★87-012-286-080	C-CAP, U 0.01-25 B
C312	★87-010-822-010	CAP, E 220-4 (MJ)	C251	★87-010-787-080	C-CAP, U 0.022-25B
CP1	87-026-504-010	P-SNSR, 5164K-F1-Q2	C252	★87-010-799-080	C-CAP, TN 0.68-16 (A2)
L3	★87-003-240-080	C-COIL, S 3.3 UH			
L4	★87-003-240-080	C-COIL, S 3.3 UH			

REF. NO.	PART NO.	DESCRIPTION	REF. NO.	PART NO.	DESCRIPTION
C253	★87-010-831-080	C-CAP, U 0.1-16F	S204	87-030-152-080	C-SW, TACT SKHU260(PRESET/CLOCK)
C254	★87-012-282-080	C-CAP, U 4700P-50 B	S208	87-036-123-080	C-SW, SLIDE 1-1-2(AM STEP)
C255	★87-012-282-080	C-CAP, U 4700P-50 B	S209	87-036-146-080	C-SW SLIDE 1-1-4(SELECTOR)
C256	★87-012-270-080	C-CAP, U 470P-50 B	VC202	87-001-708-080	C-VARACTOR, 1SV228(V4)
C257	★87-012-195-080	C-CAP, U 100P-50 CH	VC204	87-001-708-080	C-VARACTOR, 1SV228(V4)
C258	★87-010-805-080	C-CAP, S 1-16 F	X201	★87-030-180-010	X'TAL KF-38R5-8A
C259	★87-012-199-080	C-CAP, U 220P-50 CH	X202	★87-008-397-010	FILTER, SAW, 456, F18
C260	★87-012-195-080	C-CAP, U 100P-50 CH	=== BATTERY CIRCUIT BOARD SECTION ===		
C261	★87-012-142-080	C-CAP, S 0.33-16 F	C501	★84-439-620-010	CAP, E 470-4
C262	★87-012-172-080	C-CAP, U 10P-50 CH	J1	87-049-549-010	JACK, DC(DC2V)
C263	★87-012-276-080	C-CAP, U 1500P-50 B	=== CONTROL CIRCUIT BOARD SECTION ===		
C264	★87-012-184-080	C-CAP, U 33P-50 CH	S401-1	80-ZM4-603-010	SW, LEAF REC SEARCH(FWD REC PROT.)
C265	★87-012-168-080	C-CAP, U 6P-50 CH	S401-2	+++	SW, LEAF REC SEARCH(CASSETTE)
C266	★87-010-831-080	C-CAP, U 0.1-16F	S402-1	80-ZM4-604-010	SW, LEAF PLAY SEARCH(TAPE)
C267	★87-012-286-080	C-CAP, U 0.01-25 B	S402-2	+++	SW, LEAF PLAY SEARCH(REV REC PROT.)
C268	★87-010-831-080	C-CAP, U 0.1-16F	S403	87-036-253-080	C-SW, TACT(STOP/DIR)
C269	★87-010-831-080	C-CAP, U 0.1-16F	S404	87-036-253-080	C-SW, TACT(F FWD)
C270	★87-012-286-080	C-CAP, U 0.01-25 B	S405	87-036-253-080	C-SW, TACT(REW)
C271	★87-012-286-080	C-CAP, U 0.01-25 B	S406	87-036-253-080	C-SW, TACT(REC)
C272	★87-012-286-080	C-CAP, U 0.01-25 B	S407	87-036-253-080	C-SW, TACT(PLAY/DIR)
C274	★87-012-286-080	C-CAP, U 0.01-25 B	=== JACK CIRCUIT BOARD SECTION ===		
C275	★87-012-286-080	C-CAP, U 0.01-25 B	J2	87-009-733-010	JACK 3.5 BLK 5P(PHONES/REMOTE)
C276	★87-012-195-080	C-CAP, U 100P-50 CH	J3	87-009-734-010	JACK 3.5 BLK 3P(MIC)
C280	★87-012-286-080	C-CAP, U 0.01-25 B	=== HEAD FLEX. CIRCUIT BOARD SECTION ===		
C281	★87-010-640-080	C-CAP, TN 22-4 F95	RPH	09-001-251-010	HEAD, RPH ASSY
C282	★87-012-286-080	C-CAP, U 0.01-25 B	=== LED CIRCUIT BOARD SECTION ===		
C451	★87-010-746-080	C-CAP, TN 10-4	LED201	87-001-762-080	C-LED, SLM-13DW(MID)
C452	★87-010-805-080	C-CAP, S 1-16 F	LED202	87-020-508-080	C-LED, SLM-13VW(EMP)
CF203	★87-008-499-080	C-FOTR, PFBF450HM3	LED203	87-020-509-080	C-LED, SLM-13M(FULL)
CTZ201	★87-011-192-080	C-TRIMMER, CTZ30C	=== SW CIRCUIT BOARD SECTION ===		
CTZ202	★87-011-189-080	C-TRIMMER, CTZ-10A	S202	87-036-220-080	C-SW, T(MEMORY/SET)
CV205	★87-026-435-080	C-VARICAP, KV1560(A6)	S205	87-036-220-080	C-SW, T(AUTO PRESET)
L202	★81-HJ1-609-080	COIL, FM RF(R)	S206	87-036-220-080	C-SW, T(UP/HOUR)
L204	★81-HJ1-622-080	COIL, FM OSC Y(R)	S207	87-036-220-080	C-SW, T(DOWN/MIN)
L205	★87-005-564-080	C-COIL, S 2.2UH K	=== BIAS FLEX. CIRCUIT BOARD SECTION ===		
L206	★82-HJ1-607-010	BAR-ANT, MW	=== MISCELLANEOUS ===		
L207	★87-008-420-080	C-IFT, 450K, MW	M1	★M8-0ZS-294-000	ABL-7C
L208	★87-003-247-080	C-COIL, 100UH J			
L209	★87-003-243-080	C-COIL, S 10UH K			
L210	★87-006-173-080	C-COIL, DD, 5CDL			
LCD1	82-HJ2-610-010	LCD, ASSY(DISPLAY)			
LED204	87-020-508-080	C-LED, SLM-13VW(FM STEREO)			
S201	87-030-152-080	C-SW, TACT SKHU260(RESET)			
S203	87-030-152-080	C-SW, TACT SKHU260(RADIO/BAND)			

## ○チップ抵抗部品コード／CHIP RESISTOR PART CODE

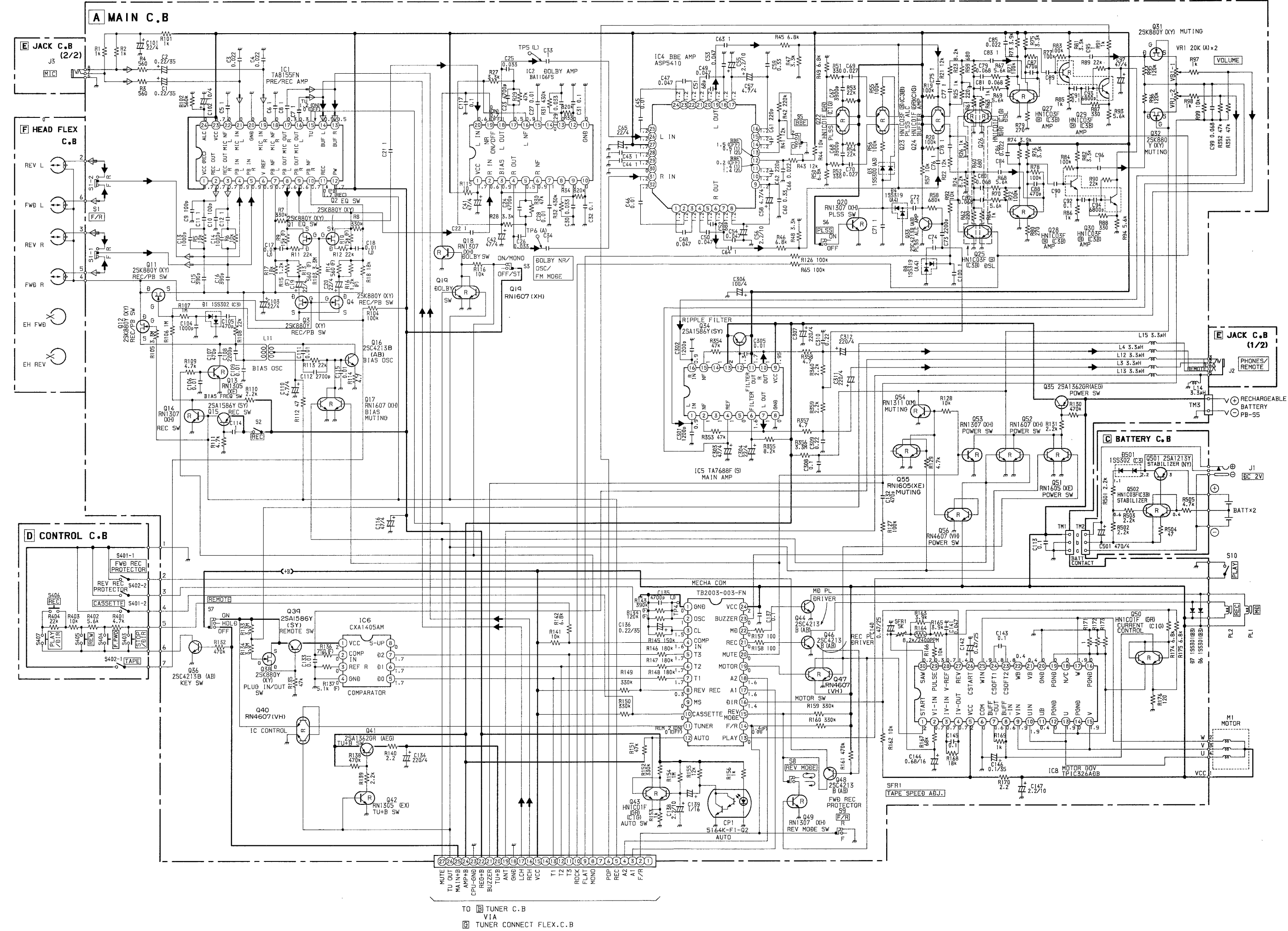


### チップ抵抗 Chip resistor

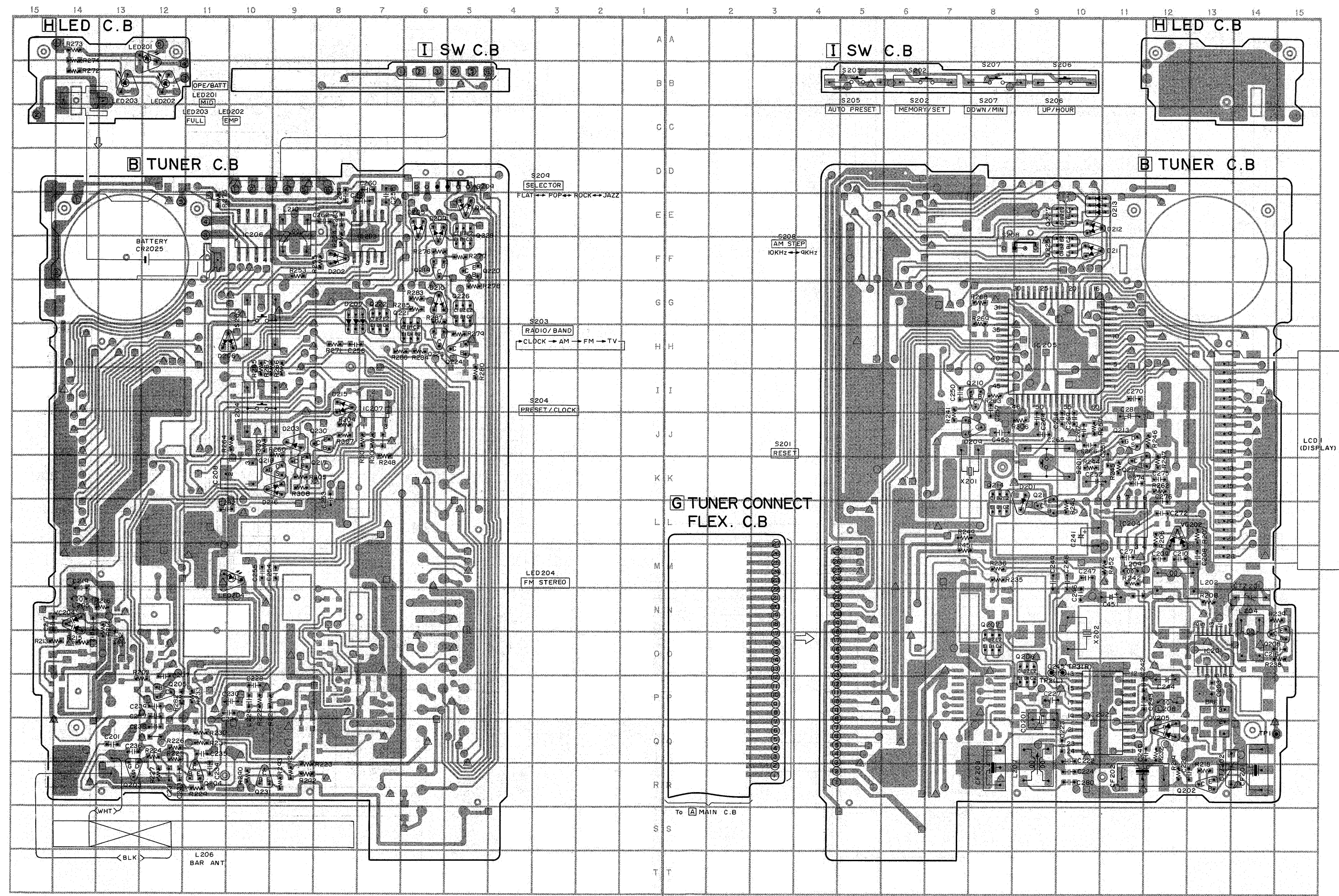
Wattage 容量	Type 種類	Tolerance 許容誤差	Symbol 記号	Dimensions/寸法(mm)			Resistor Code : A 抵抗コード : A
1/32W	1608	±5%	CJ		L	W	t
1/10W	2125	±5%	CJ		1.6	0.8	0.35
1/8W	3216	±5%	CJ		2	1.25	1.45
					3.2	1.6	0.5 ~0.7
							128

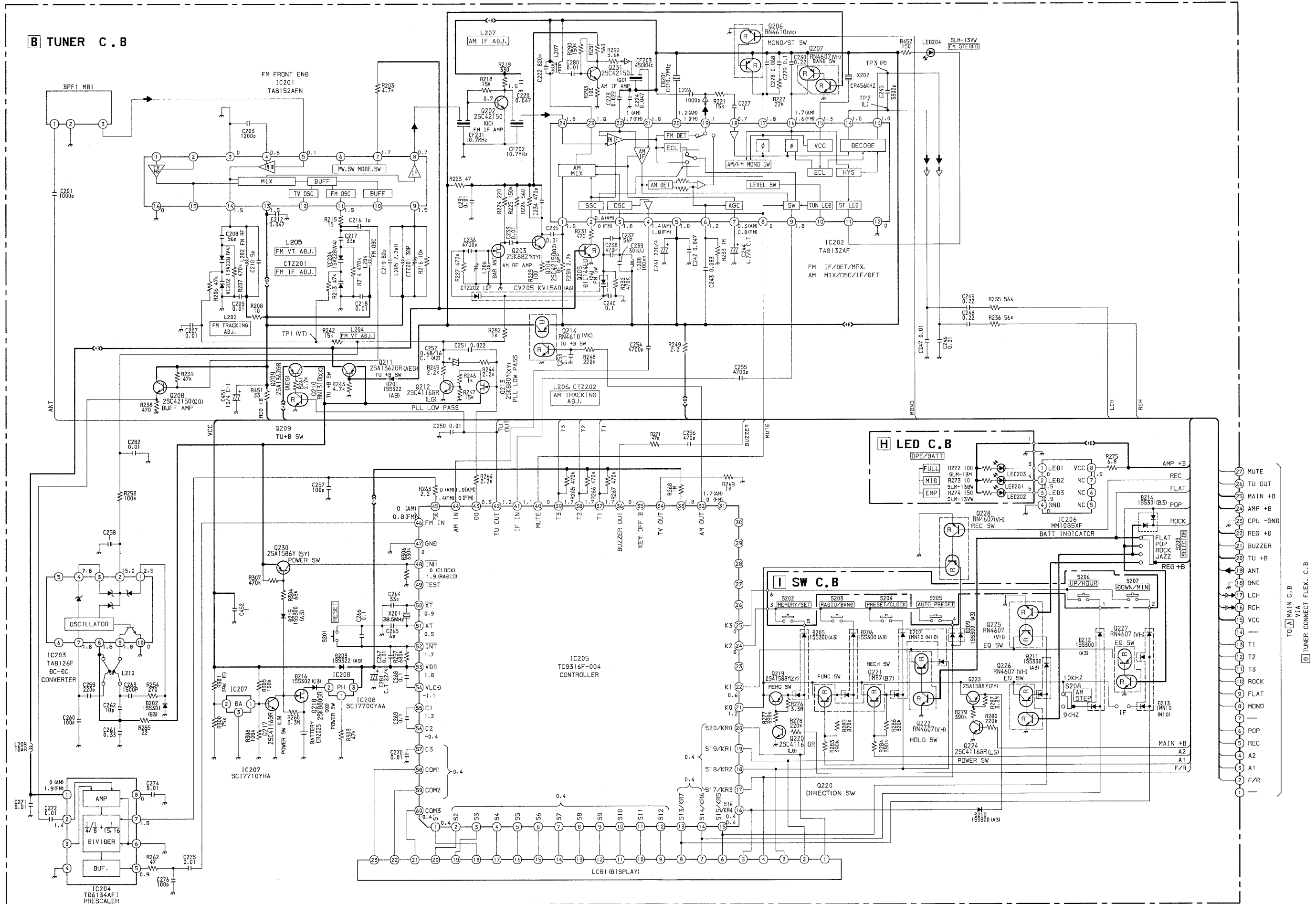




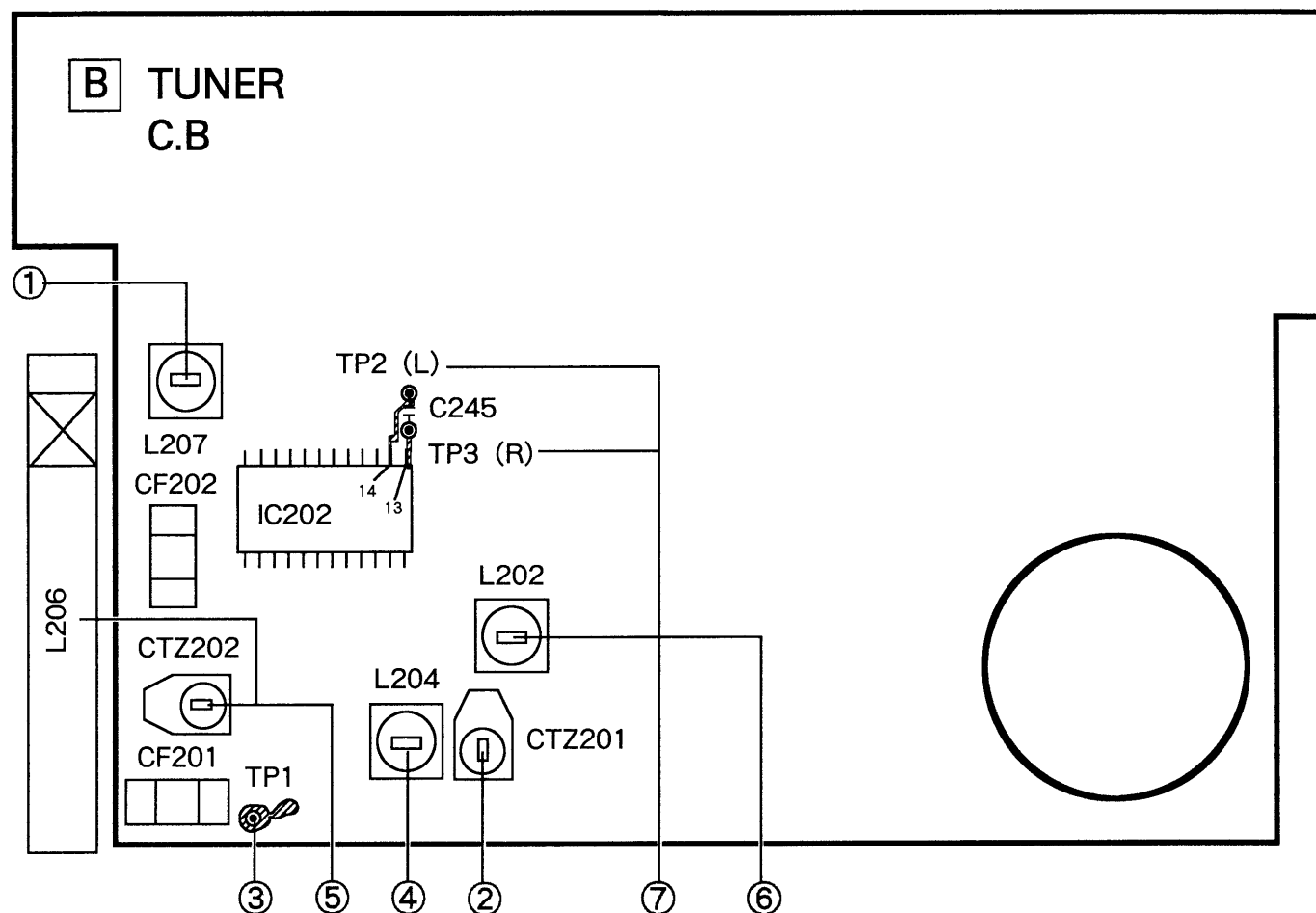








## ADJUSTMENT



### 〈RADIO SECTION〉

#### 1. AM IF Adjustment

L207..... 450kHz

#### 2. FM IF Adjustment

CTZ201.....10.7MHz

#### 3. AM VT Check

Settings : Test point • TP1

Method : Set to AM522kHz and TP1, check the voltage for  $1.0 \pm 0.2V$ .

• 9.5V or less at AM 1710kHz

#### 4. FM VT Adjustment

Settings : Test point • TP1

: Adjustment location • L204

Method : Set to FM 76MHz and adjust L204 so that the test point becomes  $1.05 \pm 0.05V$ .

• 9.5V or less at FM 108MHz.

#### 5. AM Tracking Adjustment

L206..... 630kHz

CTZ202.....1440kHz

#### 6. FM Tracking Adjustment

L202.....76MHz

#### 7. FM Separation Check

Settings : Test point • TP2 (LCH), TP3 (RCH)

: SSG 77MHz, 54dB  $\mu$

Method : Set to FM stereo check the separation for more 20dB.

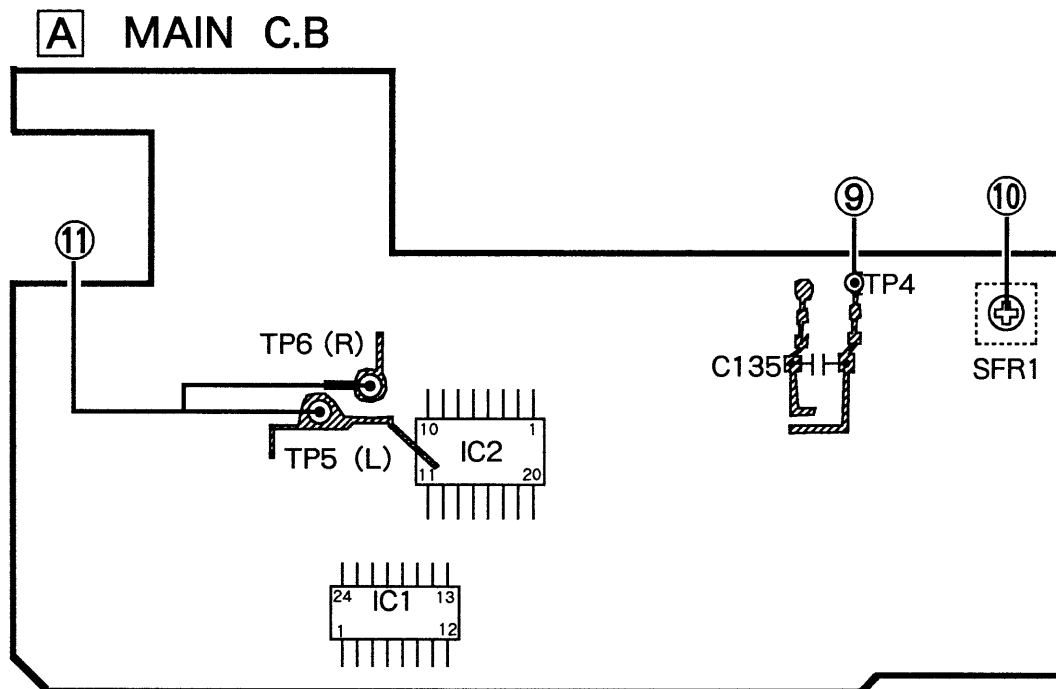
#### 8. BATT Light Level Indication Check

Settings : Supply power to a charging battery terminal ASSY from a regulated power supply.

Method : Decrease the output voltage of a regulated power supply for less 2V and check that it's voltage of below light.

$1.95 \pm 0.025V$  (FULL & MID)

$1.85 \pm 0.025V$  (MID & EMP)



#### 〈TAPE RECORDER SECTION〉

##### 9. Clock Frequency Check

Settings: Test point • TP4

Method: Connect a resistor ( $1M\Omega$ ) to counter and TP4.  
Check the frequency at TP4 is  $3200 \pm \begin{smallmatrix} 260 \\ 400 \end{smallmatrix}$  Hz.

##### 10. Tape Speed Adjustment.

Settings: Test tape • TTA - 100 (TTA - 111S)

: Test point • PHONES JACK

: Adjustment location • SFR1

Method: Play back the test tape, adjust for 3000Hz at FWD and  $\pm 45$ Hz at REV.

##### 11. Dolby Level Check

Settings: Test tape • TTS - 200 (TTA - 161S, TCC - 130)

: Test point • TP5, TP6

: DOLBY SW • OFF

: DSL SW • OFF

Method: Connect an electrolytic capacitor ( $10\mu F / 16V$ ) to measured equipment and TP5 (6),  
check the voltage for  $100mV \pm 10mV$ .

#### PRACTICAL SERVICE FIGURE

##### 〈RADIO SECTION〉

Sensitivity :

(IHF THD 3%) FM Less than 20dB (90MHz)

(S/N 10dB) AM Less than 60dB (999kHz)

Intermediate frequency : FM 10.7MHz

AM 450kHz

FM stereo separation : FM More than 17dB (1kHz)

##### 〈TAPE RECORDER SECTION〉

Wow & flutter : More than 0.45% (RMS)

Pinch roller press :  $160 \pm 15g$

Take - up torque : 20~30g - cm (FWD, REV)

F.F torque : 70~140g - cm

REW torque : 60~100g - cm

S/N ratio : More than 45dB (PB)

More than 30dB (REC)

Distortion : Less than 3% (PB)

Erasing ratio : More than 50dB (1kHz)

Noise level : Less than 4mV (VOL MAX DC)

Bias frequency : 54kHz

Frequency response : 63Hz~8kHz  $\pm 4dB$  (NORMAL)

63Hz~10kHz  $\pm 4dB$

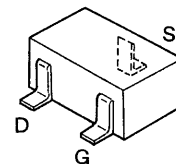
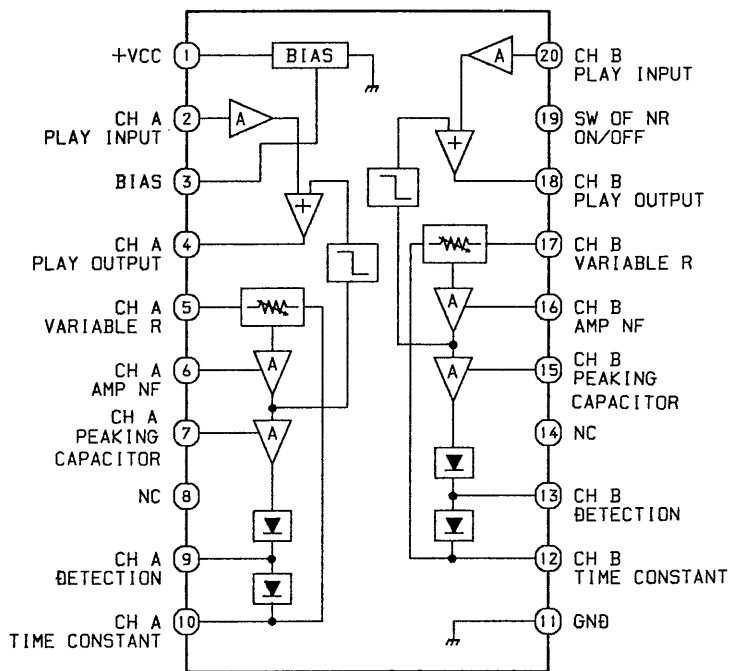
(CrO2, METAL)

## IC DESCRIPTION

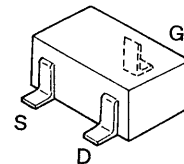
IC,TB2003 – 003 – FN [IC description,truth table,key matrix,],TC9316F – 004 [IC description, truth table,key matrix] and IC block diagram refer to the HS – JX707 service manual for IC description,truth table,key matrix,IC block diagram information.

## IC BLOCK DIAGRAM

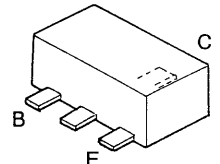
### BA1106FS



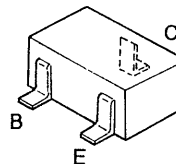
2SK882



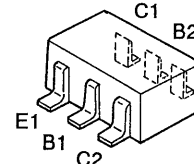
2SK880



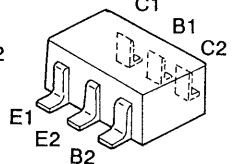
2SA1213



2SA1362  
2SA1586  
2SA1588  
2SC4116  
2SC4213  
2SC4215  
DTC144  
RN1305  
RN1307  
RN1310  
RN1311

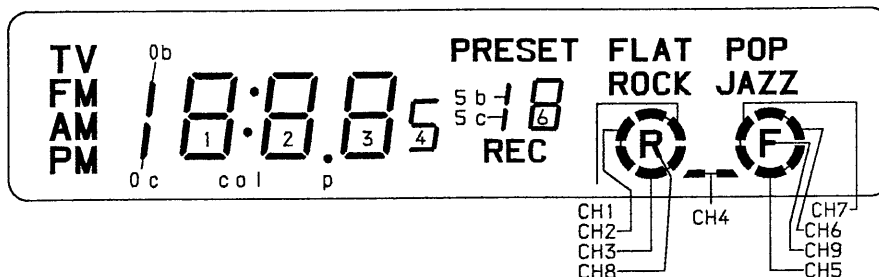


HN1C01  
HN1C03  
RN1605  
RN1607  
RN4607  
RN4610



IMB7

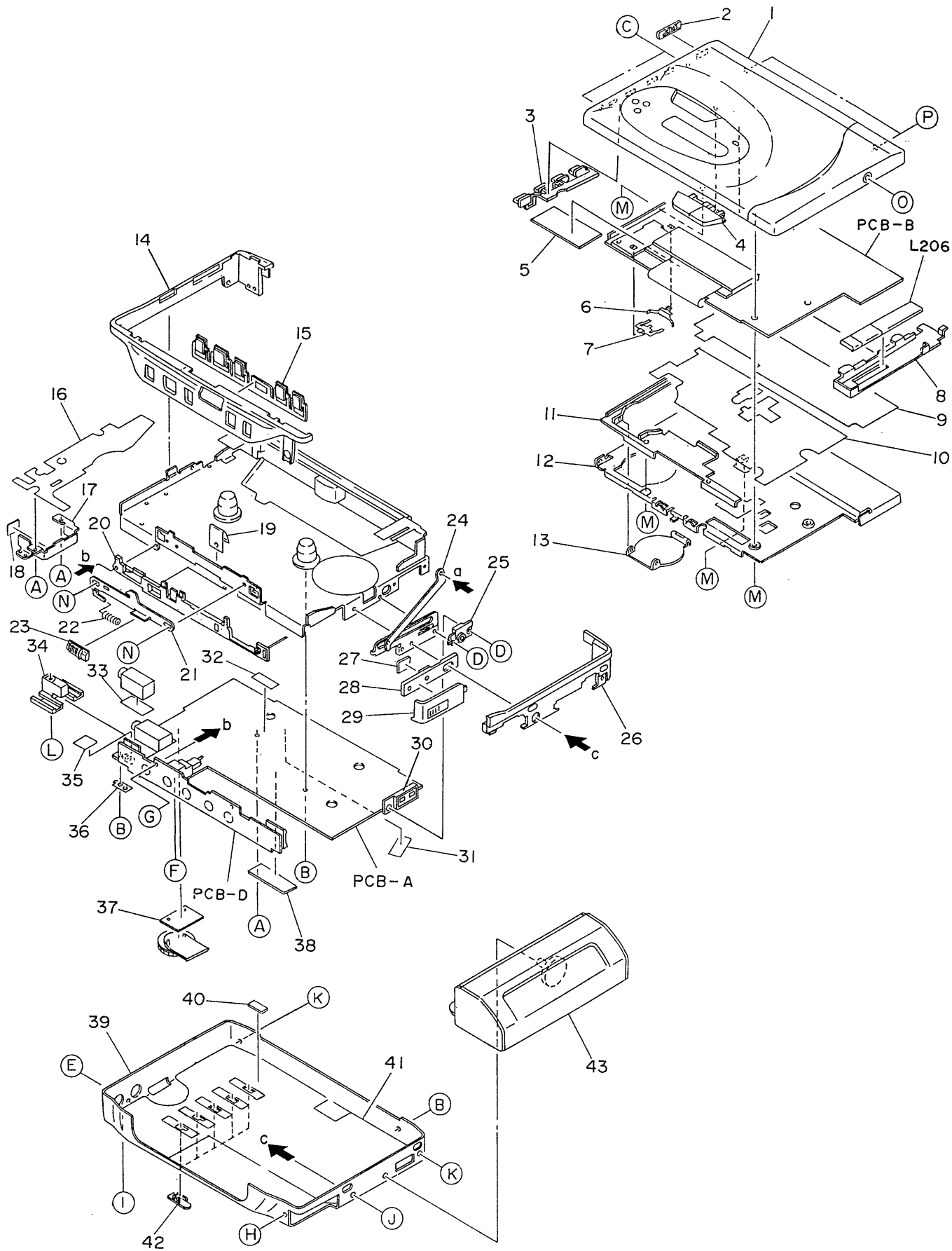
## LCD DISPLAY (LCD1)



NO	COM1	COM2	COM3
1	COM1	—	—
2	—	COM2	—
3	—	—	COM3
4	CH3	CH5	CH4
5	CH8	CH2	CH1
6	—	ROCK	—
7	FM P	REC	TV
8	PM	AM	—
9	1 d	1 e	0 b c
10	1 c	1 g	1 f
11	col	1 b	1 a
12	2 e	2 f	2 a
13	2 g	2 b	—
14	2 d	2 c	3 f
15	3 e	3 g	3 a
16	3 d	3 c	3 b
17	4	5 b c	—
18	6 f	6 a	PRESET
19	6 e	6 g	6 b
20	6 d	6 c	—
21	FLAT	—	—
22	JAZZ	—	POP
23	CH6	CH9	CH7

EXPLODED VIEW – 1

REF.NO.	PART NO.	DESCRIPTION	REF.NO.	PART NO.	DESCRIPTION	REF.NO.	PART NO.	DESCRIPTION
A	87-261-500-310	V+1.4-1.4 [B]	G	87-263-506-310	V+1.4-2.8 CR	M	87-067-385-010	VT+1.4-2.5 HL
B	87-067-746-010	SCREW-SERRATE M1.4-2(H0.5)	H	87-067-847-010	V+1.4-2.8 [B] NL	N	87-067-388-010	S-SCREW +1.4-0.8-1.0
C	87-067-589-010	V+1.4-1.4 [B] NLOCK	I	87-067-865-010	S-SCREW HJ [B]	O	87-067-626-010	S-SCREW +1.4-1.3 [B]
D	87-067-590-010	V+1.4-2.0 CR NLOCK	J	87-067-810-010	S-SCREW LB [B]	P	87-067-722-010	S-SCREW +1.4-1.8 [B] NL
E	87-067-591-010	V+1.4-2.0 [B] NLOCK	K	87-067-631-010	V+1.4-3.0 [B] NLOCK			
F	87-263-503-310	V+1.4-2.0 CR	L	87-067-855-010	V+1.4-7.0			





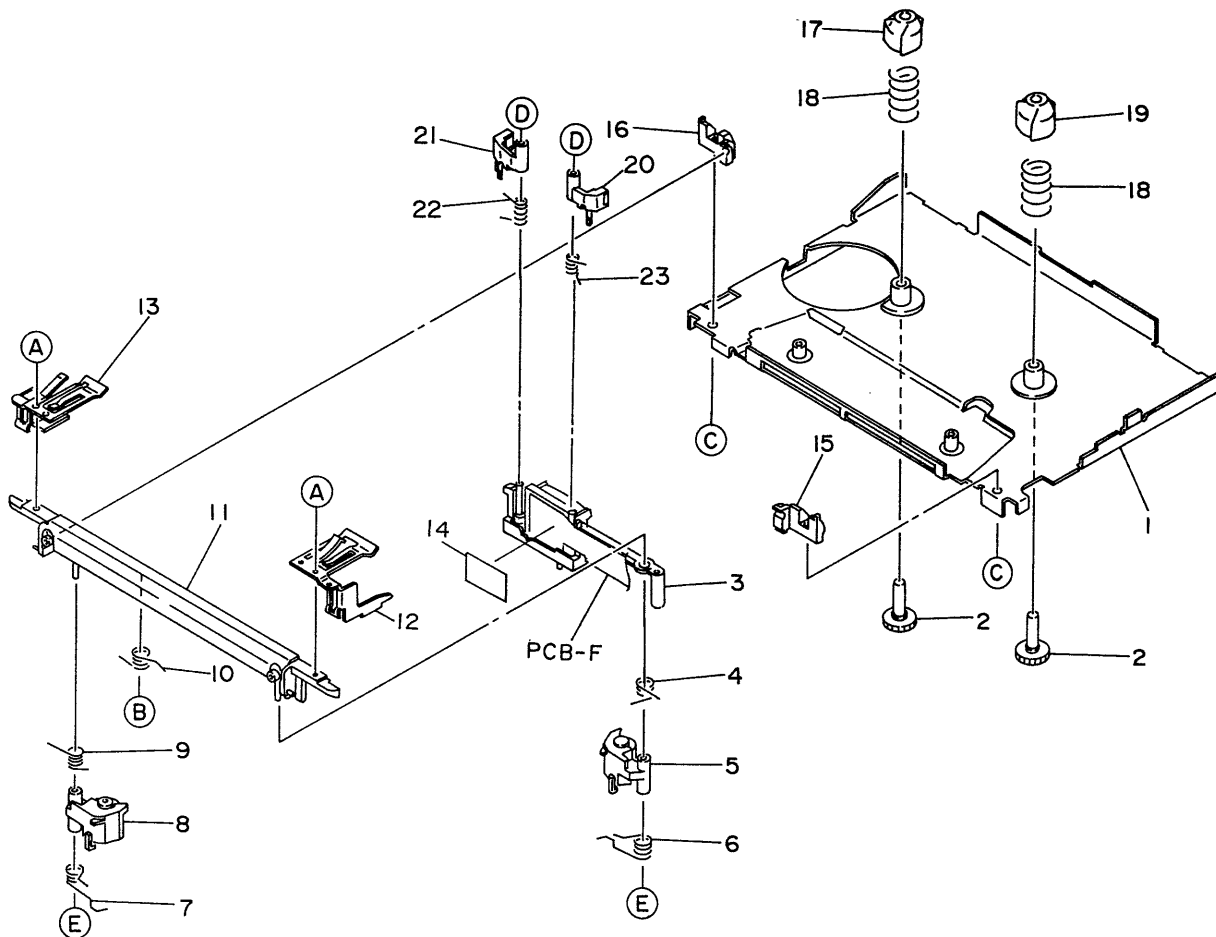
# MECHANICAL PARTS LIST

DESCRIPTIONで判断できない物は24ページの“REFERENCE NAME LIST”を参照してください。  
If can't understand for Description please kindly refer to "REFERENCE NAME LIST".

PART NO. CHANGED TO	REF. NO.	PART NO.	DESCRIPTION	COMMON MODEL	Q. TY
1-1	★	09-028-024-010	LID CASS ASSY	*	1
1-2	★	82-HJ2-011-010	KNOB, SL PG	*	1
1-3	★	82-HJ2-010-010	KEY, SET	*	1
1-4	★	82-HJ2-009-010	KEY, TU	*	1
1-5	★	82-HJ2-216-010	SH, LCD	*	1
1-6	★	82-HJ2-218-010	TERM, BAT P	*	1
1-7	★	81-HR4-211-010	TERM, BAT M	*	1
1-8	★	82-HJ2-217-010	HLDR, ANT	*	1
1-9	★	82-HJ2-215-010	SH, HLDR A	*	1
1-10	★	82-HJ2-211-010	SH, HLDR	*	1
1-11	★	82-HJ2-205-010	SPACER, LID CASS	*	1
1-12	★	82-HJ2-201-010	HLDR, CASS	*	1
1-13	★	82-HJ2-013-010	LID, L-BAT	*	1
1-14	★	82-HJ2-002-010	FRAME, CENTER	*	1
1-15	★	82-HJ2-007-010	KEY, CONT	*	1
1-16	★	81-HJ2-216-010	SH, CHAS		1
1-17	★	81-HJ2-213-010	HLDR, JACK		1
1-18	★	80-HJ1-238-010	SH-PT		1
1-19	★	82-HJ2-206-010	SPR-P, CASS	*	1
1-20	★	82-HJ2-207-010	SPACER, BAT	*	1
1-21	★	82-HJ2-202-010	LVR, EJECT	*	1
1-22	★	82-HJ2-204-010	SPR-C, EJECT	*	1
1-23	★	82-HJ2-005-010	KNOB, EJECT	*	1
1-24	★	81-HJ2-203-110	HLDR ARM ASSY		1
1-25	★	81-HK3-216-010	NUT, B-BOX		1
1-26	★	82-HJ2-006-010	FRAME, BOTTOM	*	1
1-27	★	81-HK3-227-010	G-CU, 7-5-0.3		1
1-28	★	81-TP1-212-010	HINGE, BAT A		1
1-29	★	81-HJ2-006-010	LID, BAT		1
1-30	★	81-HK3-212-010	BAT, CONTACT ASSY		1
1-31	---	---	HIMERON, 7-14		1
1-32	★	81-HK3-226-010	SH, 5-8-0.1		1
1-33	★	81-HW1-213-010	SH, JACK		1
1-34	★	81-HJ2-222-010	HLDR, JACK M		1
1-35	★	81-HJ2-622-010	SH, 7-6-0.025		1
1-36	★	81-HJ2-212-110	SPR-P, EARTH		1
1-37	★	81-HJ2-226-110	SH, VOL		1
1-38	★	84-518-210-010	SH, A		1
1-39	★	82-HJ2-019-010	CAB, REAR EX	*	1
1-40	★	81-HJ2-233-010	G-CU, 4X8X0.5		1
1-41	★	82-HJ2-213-010	SH, REAR	*	1
1-42	★	81-HJ2-014-010	KNOB, SL		5
1-43	★	09-027-882-010	BAT BOX ASSY	*	1

# EXPLODED VIEW - 2

REF.NO.	RART NO.	DESCRIPTION
A	87-357-503-310	VT <sub>2</sub> +1.4-2.0
B	80-ZM4-346-010	VFT <sub>2</sub> +1.4-2.0
C	87-353-528-310	VT <sub>2</sub> +1.7-3.5CR
D	87-067-913-010	PW0.83-2.0-0.4 SLT
E	87-067-569-010	PW0.83-2.5-0.25



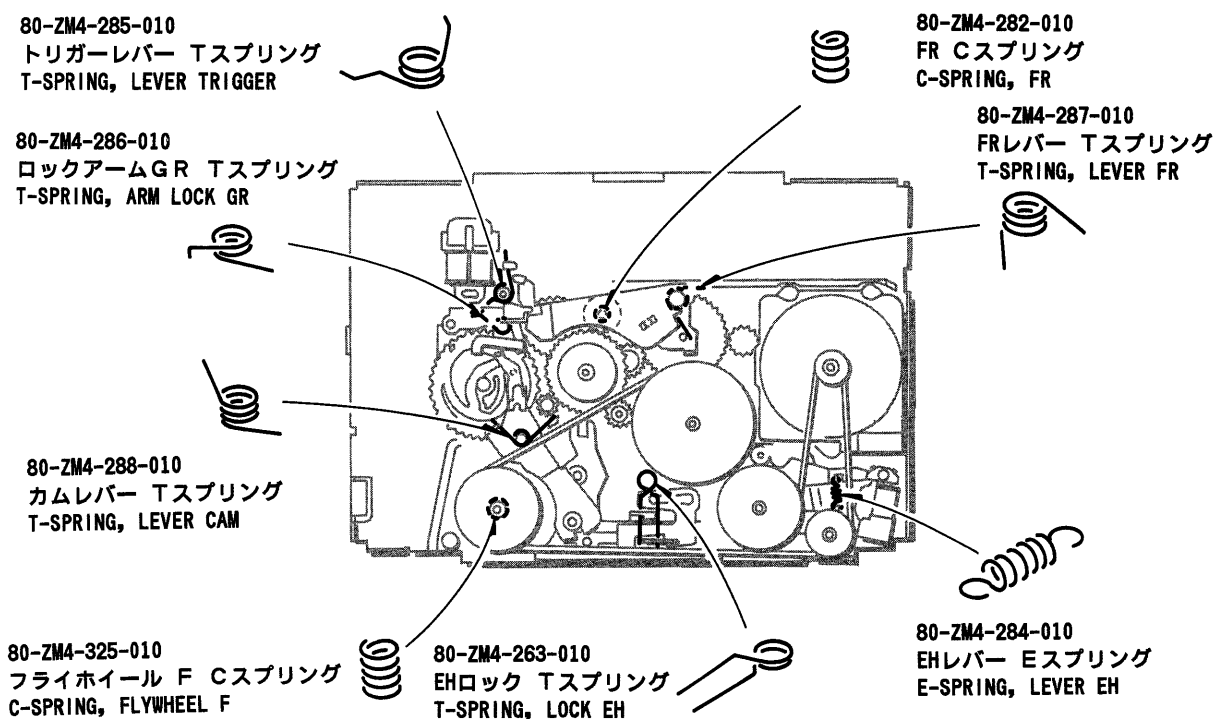
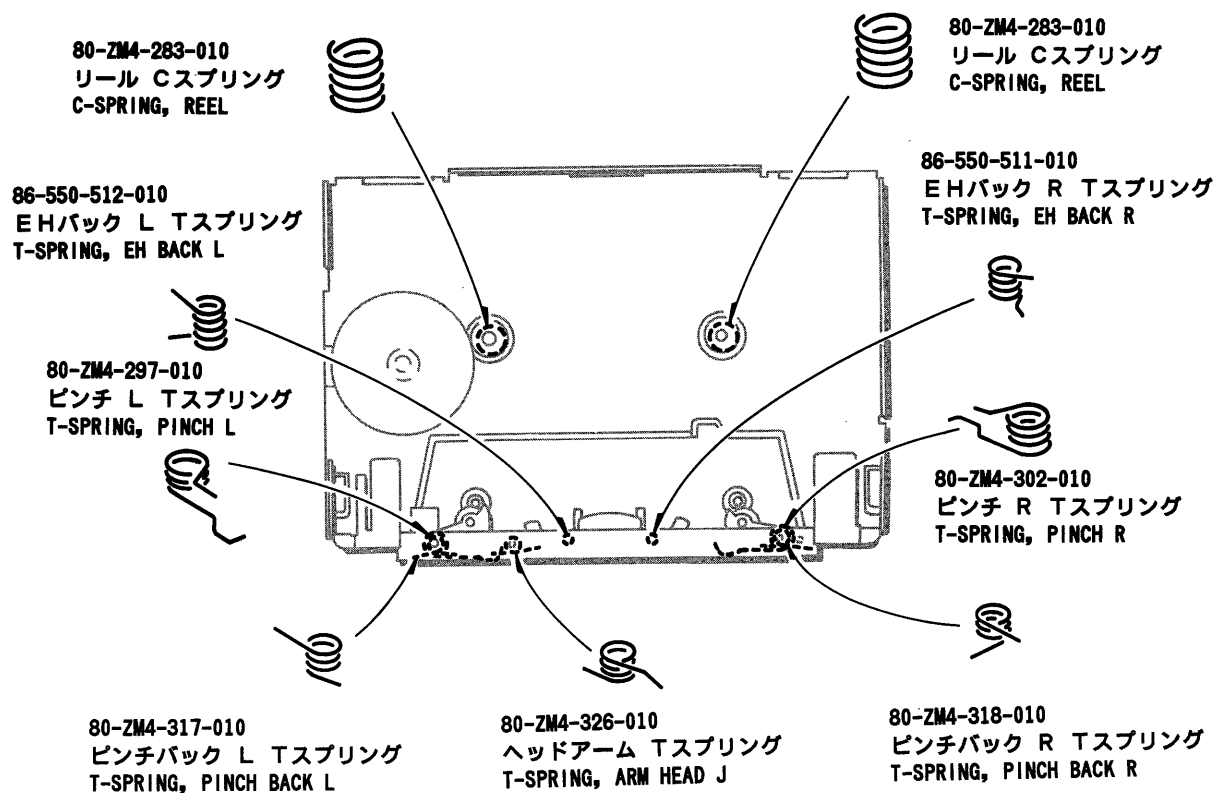
PART NO. CHANGED TO	REF. NO.	PART NO.	DESCRIPTION	COMMON MODEL	Q, TY
	2-1	★ 80-ZM4-201-810	CHASSIS OUTSERT ASSY	*	1
	2-2	★ 80-ZM4-290-410	GEAR, REEL	*	2
	2-3	★ 09-001-251-010	ARM HEAD ASSY	*	1
	2-4	★ 80-ZM4-318-110	T-SPRING, PINCH BACK R	*	1
	2-5	★ 80-ZM4-370-010	LEVER PINCH RN ASSY	*	1
	2-6	★ 80-ZM4-302-410	T-SPRING, PINCH JR	*	1
	2-7	★ 80-ZM4-297-310	T-SPRING, PINCH JL	*	1
	2-8	★ 80-ZM4-369-010	LEVER PINCH LN ASSY	*	1
	2-9	★ 80-ZM4-317-210	T-SPRING, PINCH BACK L	*	1
	2-10	★ 80-ZM4-326-110	T-SPRING, ARM HEAD J	*	1
	2-11	★ 80-ZM4-209-310	HOLDER CASSETTE ASSY	*	1
	2-12	★ 80-ZM4-366-010	P-SPRING, HOLDER R	*	1
	2-13	★ 80-ZM4-367-010	P-SPRING, HOLDER L	*	1
	2-14	★ 80-ZM4-330-010	SHEET, 4.5-12	*	1
	2-15	★ 80-ZM4-321-310	HOLDER R	*	1
	2-16	★ 80-ZM4-322-410	HOLDER L	*	1
	2-17	★ 80-ZM4-230-110	REEL, CAP L	*	1
	2-18	★ 80-ZM4-283-310	C-SPRING, REEL	*	2
	2-19	★ 80-ZM4-231-010	REEL, CAP R	*	1
	2-20	★ 80-ZM4-294-110	ARM EH ASSY R	*	1
	2-21	★ 80-ZM4-293-110	ARM EH ASSY L	*	1
	2-22	★ 86-550-512-010	T-SPRING, EH BACK L	*	1
	2-23	★ 86-550-511-010	T-SPRING, EH BACK R	*	1

REF. NO.	PART NO.	DESCRIPTION
A	87-067-859-010	PW0.8-2.5-0.2 SLT
B	80-ZM4-365-010	S-SCREW 1.4-1.8
C	87-067-861-010	PWMA-SHEET 1.2-2.4-0.13
D	87-067-957-010	PW0.95-3-0.4 SLT
E	87-067-860-010	PW3.0-0.95-0.4
F	87-067-897-010	PW3.0-0.95-0.5
G	87-067-359-010	S-SCREW 1.4-2.5 (B)
H	87-067-817-010	PW1.55-3.5-0.3
I	87-067-693-010	PW3.0-0.8-0.25 SLT
J	87-067-370-010	RW1.2-3.0-0.25
K	87-067-384-010	VT1.4-3.5HL
L	87-067-818-010	PW3.1-7.0-0.25 SLT
M	87-067-819-010	V+1.4-3.0C
N	87-067-569-010	PW0.83-2.5-0.25 CUT



PART NO. CHANGED TO	REF. NO.	PART NO.	DESCRIPTION	COMMON MODEL	Q, TY
3-1	★	80-ZM4-243-210	PULLEY, IDLER	*	1
3-2	★	80-ZM4-217-810	LEVER HEAD ASSY	*	1
3-3	★	80-ZM4-305-210	LINK PLAY ASSY	*	1
3-4	★	80-ZM4-232-010	GEAR, CAM PLAY	*	1
3-5	★	86-536-467-010	PLATE, MR2		1
3-6	★	80-ZM4-227-010	GEAR, LINK B	*	1
3-7	★	80-ZM4-235-310	GEAR, CAM	*	1
3-8	★	80-ZM4-377-010	ARM, LOCK FR	*	1
3-9	★	80-ZM4-274-210	ARM, LOCK GR	*	1
3-10	★	80-ZM4-286-110	T-SPRING, ARM LOCK GR	*	1
3-11	★	80-ZM4-225-210	LEVER, TRIGGER	*	1
3-12	★	80-ZM4-285-110	T-SPRING, LEVER TRIGGER	*	1
3-13	★	80-ZM4-221-610	LEVER CAM ASSY	*	1
3-14	★	80-ZM4-288-010	T-SPRING, LEVER CAM	*	1
3-15	★	80-ZM4-325-210	C-SPRING, FLYWHEEL F	*	1
3-16	★	80-ZM4-246-310	FLYWHEEL F ASSY	*	1
3-17	★	80-ZM4-257-010	BELT	*	1
3-18	★	80-ZM4-240-010	FLYWHEEL R ASSY	*	1
3-19	★	80-ZM4-245-710	GEAR SLIP ASSY	*	1
3-20	★	80-ZM4-218-110	LEVER GEAR PLAY ASSY	*	1
3-21	★	80-ZM4-385-010	GEAR, PLAY	*	1
3-22	★	80-ZM4-210-410	LEVER, LOCK FR	*	1
3-23	★	80-ZM4-222-210	LEVER IDLER ASSY	*	1
3-24	★	80-ZM4-287-110	T-SPRING, LEVER FR	*	1
3-25	★	80-ZM4-282-110	C-SPRING, FR	*	1
3-26	★	80-ZM4-234-210	GEAR, FR	*	1
3-27	★	80-ZM4-228-010	GEAR, IDLER R	*	1
3-28	★	80-ZM4-259-110	PLATE FR ASSY	*	1
3-29	★	80-ZM4-277-110	REEL, AUTO	*	1
3-30	★	80-ZM4-229-010	GEAR, IDLER L	*	1
3-31	★	80-ZM4-244-010	GEAR, IDLER PLAY	*	1
3-32	★	80-ZM4-226-110	GEAR, LINK A	*	1
3-33	★	80-ZM4-329-110	SHEET, 3-0.8-0.25 SLT	*	1
3-34	★	80-ZM4-239-010	PULLEY GEAR ASSY	*	1
3-35	★	80-ZM4-347-110	SHEET, 5.5-29.7-0.05	*	1
3-36	★	86-550-455-010	SHEET, CUT 0.87-2.25-0.25		2
3-37	★	80-ZM4-337-010	SHEET, 12-T0.05	*	1
3-38	★	80-ZM4-284-110	E-SPRING, LEVER EH	*	1
3-39	★	80-ZM4-261-010	LEVER REC PL ASSY	*	1
3-40	★	80-ZM4-263-010	T-SPRING, LOCK EH	*	1
3-41	★	80-ZM4-258-210	LEVER REC LINK ASSY	*	1
3-42	★	80-ZM4-262-210	LEVER REC EH ASSY	*	1

# SPRING APPRICATION POSION



# REFERENCE NAME LIST

## ELECTRICAL SECTION

DESCRIPTION	REFERENCE NAME
ANT	ANTENNAS
C-	CHIP
C-CAP	CAP, CHIP
C-CAP TN	CAP, CHIP TANTALUM
C-COIL	COIL, CHIP
C-DI	DIODE, CHIP
C-DIODE	DIODE, CHIP
C-FET	FET, CHIP
C-FOTR	FILTER, CHIP
C-JACK	JACK, CHIP
C-LED	LED, CHIP
C-RES	RES, CHIP
C-SFR	SFR, CHIP
C-SLIDE SW	SLIDE SWITCH, CHIP
C-SW	SWITCH, CHIP
C-TR	TRANSISTOR, CHIP
C-VR	VOLUME, CHIP
C-ZENER	ZENER, CHIP
CAP, CER	CAP, CERA-SOL
CAP, E	CAP, ELECT
CAP, M/F	CAP, FILM
CAP, TC	CAP, CERA-SOL
CAP, TC-U	CAP, CERA-SOL SS
CAP, TN	CAP, TANTALUM
CF	FILTER, CERAMIC
DL	DELAY LINE
E/CAP	CAP, ELECT
ECM	ECM
FLTR	FILTER
FUSE RES	RES, FUSE
P-DIODE	PHOTO DIODE
P-SNSR	PHOTO SENSOR
P-TR	PHOTO TRANSISTOR
PT	POWER TRANSFORMER
PTR, RES	PTR, MELF
RC	REMOTE CONTROLLER
RES NF	RES, NON-FLAMMABLE
SHLD	SHIELD
SOL	SOLENOID
SPKR	SPEAKER
SW, LVR	SWITCH, LEVER
SW, RTRY	SWITCH, ROTARY
SW, SL	SWITCH, SLIDE
THMS	THERMISTOR
TR	TRANSISTOR
TRIMMER	CAP, TRIMMER
TUN-CAP	VARIABLE CAPACITOR
VIB, CER	RESONATOR, CERAMIC
VIB, XTAL	RESONATOR, CRYSTAL
VR	VOLUME
ZENER	DIODE, ZENER
サージサプレッサ	SERGESUPPRESSOR
セラコン	CAP, CERA

## MECHANICAL SECTION

DESCRIPTION	REFERENCE NAME
ADHESHIVE	SHEET ADHESHIVE
BAR-ANT	BAR-ANTENNA
BAT	BATTERY
BAT, CONTACT ASSY	BATTERY CONTACT ASSY
BATT	BATTERY
BRG	BEARING
BTN	BUTTON
CAB	CABINET
CAB, FR	CABINET, FRONT
CAB, REAR	CABINET, REAR
CASS	CASSETTE
CHAS	CHASSIS
CHAS, FR	CHASSIS, FRONT
CHAS, MECHA	CHASSIS, MECHANISM
CLR	COLLAR
CONT	CONTROL
CUSH	CUSHION
DIR	DIRECTION
FR	FRONT
G-CU	G-CUSHION
HDL	HANDOL
HIMERON	CLOTH
HINGE, BAT	HINGE, BATTERY
HLDR	HOLDER
HT-SINK	HEAT SINK
IB	INSTRUCTION BOOKLET
IND, L-R	INDICATOR, L-R
KEY, CONT	KEY, CONTROL
KEY, PRGM	KEY, PROGRAM
KNOB, SL	KNOB, SLIDE
KNOB, VOL REV	KNOB, VOLUME REV
LBL	LABEL
LID, BATT	LID, BATTERY
LID, CASS	LID, CASSETTE
LVR	LEVER
P-SP	P-SPRING
PANEL, CONT	PANEL, CONTORL
PANEL, FR	PANEL, FRONT
PULLY, LOAD MO	PULLY, LOADING MOTOR
RBN	RIBBON
S-	SPECIAL
SH	SHEET
SH, CHAS	SHEET, CHASSIS
SH, DISP	SHEET, DISPLAY
SHLD-SH	SHILD-SHEET
SL	SLIDE
SP	SPRING
SP, SCREW BAT	SPECIAL SCREW BATTERY
SP-SCREW	SPECIAL-SCREW
SPACER, BAT	SPACER, BATTERY
SPR	SPRING
SPR-P	P-SPRING
SPR-P ASSY OPEN	P-SPRING OPEN ASSY
SPR-P, LOCK	P-SPRING, LOCK
SPR-PC-PUSH	P-SPRING, C-PUSH
SW	SWITCH
T-SP	T-SPRING
TERM	TERMINAL
TUN	TUNING
VOL	VOLUME
W	WASHER
WHL	WHEEL
WORM-WHL	WORM-WHEEL
ジクアーム	ARM, SHAFT
ジクガイド	GUIDE, SHAFT
ストラップ	STRAP



## ■ ACCESSORIES/PACKAGE LIST

DESCRIPTIONで判断できない物は24ページの“REFERENCE NAME LIST”を参照してください。  
 If can't understand for Description please kindly refer to “REFERENCE NAME LIST”.

PART NO. CHANGED TO	REF. NO.	PART NO.	DESCRIPTION	COMMON MODEL	Q,TY
	1	★82-HJ2-901-010	IB,EX	※	1
	2	★82-HJ2-903-010	IB,E (AE1,AZ)	※	1
	3	★82-HJ2-951-010	CARRYING CASE EX	※	1
	4	★87-041-064-010	MIC,CM - S20 A		1
	5	★87-042-094-119	AC - 207 HA (AH1)		1
	6	★87-042-095-119	AC - 207 EA (AE1,AZ)		1
	7	★87-042-096-119	AC - 207 KA (AK1)		1
	8	★09-027-882-010	BATTERY BOX ASSY [J - B]		1
	9	★87-047-131-010	BAT,CR2025M		1
	10	★87-047-125-010	PB - S5 NAY		1
	11	87-048-241-010	HP - R35 NA (AH1,AE1,AK1)		1
	12	87-048-254-010	HP - MR35 A (AZ)		1

サービス技術ニュース	
番号	連絡内容
G - -	
G - -	
G - -	

**アイワ株式会社**  
**AIWA CO.,LTD.**

737004, 861377

**Tokyo Japan**